

CITRUS



## Peace River Valley Citrus Growers Association

### Early Cold Weather Plagues

Growers statewide have been surprised at the early and repeated freezing temperatures experienced in December. Costs are



skyrocketing as diesel trucks deliver tank after tank of fuel and grove workers spent night after night watching over their groves.

Forecasters are predicting this colder than normal pattern to persist through January as the La Nina continues its dominance.

Temperatures are expected to be ten to eleven degrees colder than normal in Florida. Forecasters are specifically concerned about the period between January 12-22, as dates more freezing temperatures could be prevalent.

Damage reports throughout PRVCGA's territory have been varied. Known cold spots report incidences of frozen fruit



from temperatures sustained in the teens and heavy leaf burn from frost.

Fruit is dropping in these areas, including Valencia oranges. Noting this damage, the USDA is canvassing the state to determine the impact to the estimate crop. Their report is due for release January 18.

For more weather information regarding the December freezes, see page 2.

### Annual Meeting Planning

Peace River Valley Citrus Growers Association is in the process of planning the 2011 annual meeting, which according to our bylaws must be held in the first quarter of the year.

The board would like to provide you with a timely and interesting program, thus the delay. Due to the timing of this process, details have been on hold awaiting their inauguration.



Because this is a time dated process, we will need everyone's help in making this meeting a success. This starts with sponsorship. We will offer three levels of

sponsorship (Platinum \$1,500, Gold \$750 and Silver 400), which include varying benefits to the sponsors.

If you are interested in sponsoring or learning more about the benefits, please contact the association.

Many members noted interest on their annual membership forms. We will be in contact you shortly.

Volume 18, No. 1  
January 2010

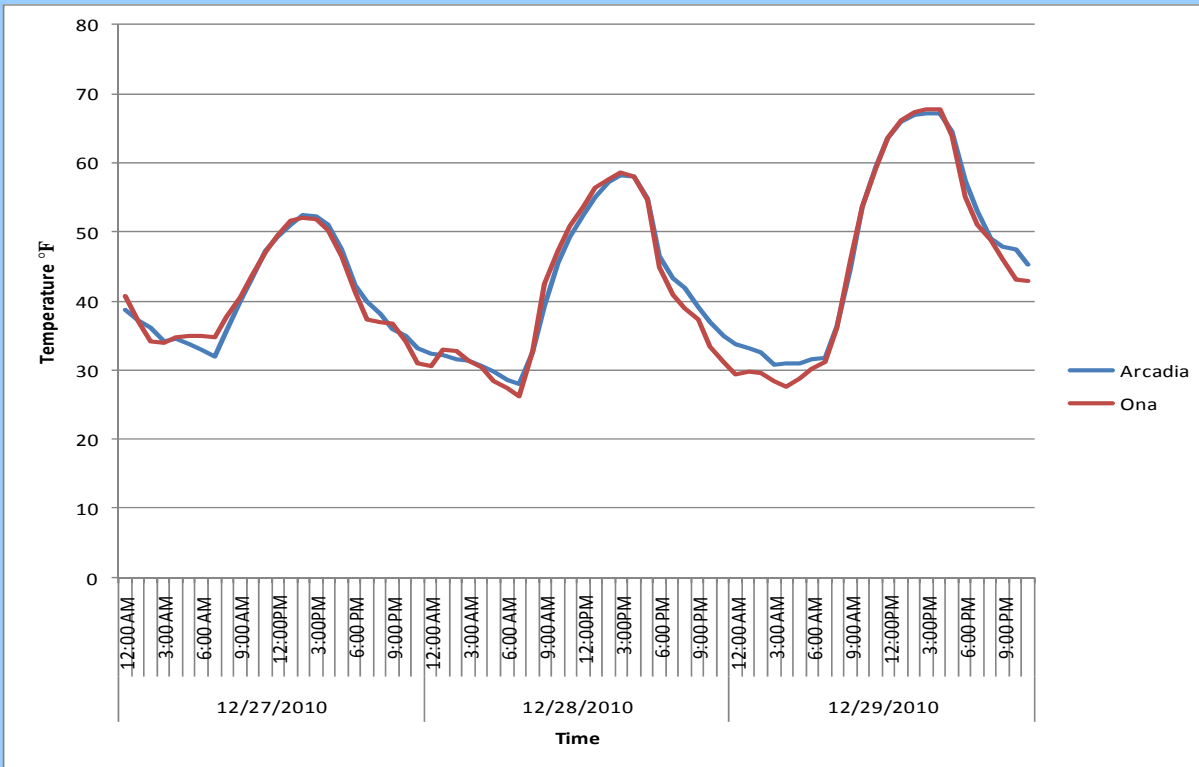
#### Points of Interest:

*Weather Recap*  
*Putnam Appoints Staff*  
*Cold Weather & Psyllid*

#### Inside this issue:

<i>Weather Continued</i>	2
<i>Members in the News</i>	2
<i>Ag Hall of Fame Tickets</i>	2
<i>Cold Weather &amp; Psyllid</i>	3
<i>Putnam Appoints Staff</i>	3
<i>Educational Opportunities</i>	4
<i>2010 Associate Members</i>	5
<i>Education Ops. Continued</i>	6
<i>OJ Sales Continue Decline</i>	6
<i>FAWN-Freeze Tools</i>	6
<i>Office Update</i>	6
<i>Florida Citrus Show</i>	7
<i>Preparing for Your Next Crop</i>	8
<i>Putnam Staff Continued</i>	8
<i>Phone Update</i>	8
<i>Board Meeting</i>	8

**Weather** Continued from Page 1



*Temperatures dipped into the 20's in most areas, and into the teens in colder areas.*

*PRVCGA growers reported a wide range of impacts from slight to Valencias frozen solid.*

*Dropping fruit and burned leaves are now apparent.*



*Damage caused by December freeze begins to show as temperatures rise into the high 70s making recovery more critical.*

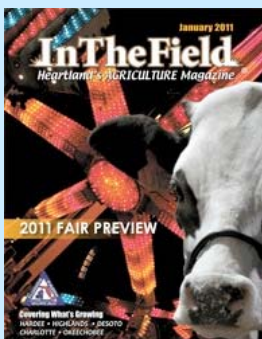


*PRVCGA president, Justin Sorrells works with Jeremiah Jacobsen of Wink News. Justin worked with several news outlets to explain our industry concerns.*



*Wink News meteorologist, Jim Farrell shows the southern reach of sub-freezing temperatures.*

**Members in the News**



*Grower member, Cary Mercer was featured in the December edition of In the Field Magazine.*

**Ag Hall of Fame Tickets Available**

Tickets are now available for the 2011 Florida Agriculture Hall of Fame to be held February 15 — 5:30 p.m.



Tickets can be purchased by calling Hillsborough County Farm Bureau at 813-230-1918.

## Cold Weather & Psyllid

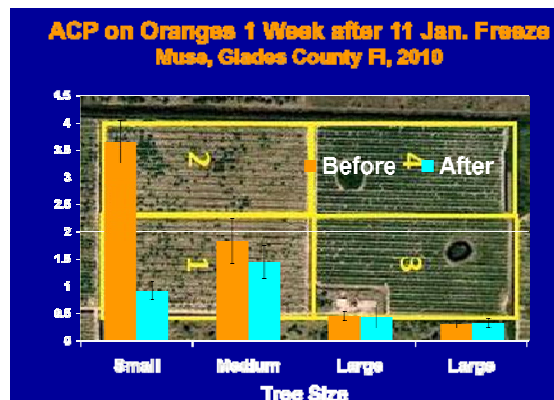
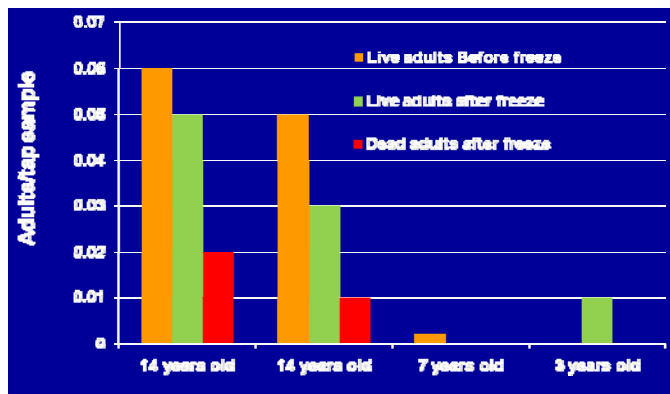
After last year's cold weather, many wondered how freezing temperatures impacted psyllid populations. Thanks to research conducted by Dr. Phil Stansly at the Southwest Florida Research and Education Center, we now have a better idea of the between freezing temperatures and psyllid populations.

Data shows populations were reduced and do not recover until the spring flush is available. Psyllid on larger trees were more protected than on resets.

Dormant sprays are still needed to reduce populations even further. The decrease in the psyllid population will help enhance the effectiveness of the

dormant sprays. Dr. Stansly is urging growers to complete their dormant spray programs to further impact the breeding population.

Hear Dr. Stansly's comments and view his report at <http://southeastagnet.com/2010/12/21/researcher-psyllids-survived-2010-freezes-sprays-still-needed/>.



## Putnam Appoints Support Staff



ADAM H. PUTNAM  
COMMISSIONER

Adam Putnam was sworn into office January 5 as the 11th Florida Commissioner of Agriculture and Consumer Services. All of Florida agriculture is eager to see what fresh perspective will bring to the largest state Department of Agriculture in the nation.

The Commissioner started by appointing a variety of individuals to key staff positions. These division and department leaders will be people to know relative to citrus production.

**Mike Joyner, Assistant Commissioner/Chief of Staff:** Joyner has more than 25 years experience building partnerships between the private and public sectors to advance common-sense business, natural resource and environmental policies. He joins the Department from the private sector after having previously served as Chief of Staff at the Department of Environmental Protection and stints at the Florida

Farm Bureau and Florida Forestry Association.

**Marion Aller, Acting Deputy Commissioner:** Aller joined the Department in 1986. She has previously served as Director of Food Safety and held several technical positions in the Bureau of Pesticides, rising to Chief in 1992.

**Jay Levenstein, Deputy Commissioner:** Levenstein joined the Department in November 1993. Prior to his role as Deputy Commissioner under Commissioner Bronson, he served as the Department's State-Federal Relations Director, Legislative Affairs Director, Chief of the Bureau of Animal Disease Control and Senior Attorney.

**Shannon Shepp, Acting Deputy Commissioner:** Shepp joined the Department in 2001 as assistant division director and has served as the Fruit and Vegetables Division Director since 2004. Prior to the Department, her career included public affairs management in the citrus and home building industries

and service as a legislative assistant in the Florida Legislature.

**Cheryl Flood, Director of External Affairs:** Flood joins the Department after having served as the Chief of Staff for Congressman Adam Putnam. She previously worked in the Department as Deputy Legislative Affairs Director under Bronson.

**Matt Joyner, Director of Federal Affairs:** Joyner comes to the Department from the private sector in the financial services arena after having previously served as Chief of Staff and District Director to Congressman Adam Putnam.

**Grace Lovett, Director of Legislative Affairs:** Lovett comes to the Department from the Florida Department of Environmental Protection, where she served as Deputy Director and Acting Director of the Office of Legislative Affairs. She has also previously worked for the Florida Public Service Commission, The Rubin Group and Florida Credit Unions.

## Educational Opportunities

### IFAS Citrus Variety Displays

The following IFAS Variety Displays have been scheduled for the 2010/2011 season. Volunteers are asked to come and score the varieties of fruit presented. The data compiled from the scoring will then be turned over to the UF/IFAS research team. The dates are:

- ♦ Jan. 11, 2011, Fort Pierce
- ♦ Mar. 1, 2011, Lake Alfred

### Citrus Pest Management

Citrus Pest Management will be offered Wednesdays Jan. 5-April 27 from 3-6 p.m. at the UF/IFAS Citrus Research and Education Center (CREC) in Lake Alfred and via distance education at the Department of Entomology and Nematology in Gainesville. Additional distance education sites and sections will be established at UF-IFAS Research and Education Centers on request. This is a graduate-level course (3.0 units). Course topics include identification and biology of citrus pests and diseases; pest and disease monitoring; ecological and economic principles as a basis for pest management; economic thresholds and pest management models; integrated pest management in citrus and the evolution of Citrus IPM in the era of citrus greening. Call Debbie Hall (352-273-3912) for assistance in registering.

### HLB Conference

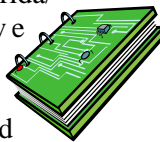


The International Research Conference on Huanglongbing is Jan 10-14 in Orlando at the Caribe Royal Hotel and Convention Center. The "Grower Day" will be the 14th, and will give the attendees messages on what greening research can be implemented now and in the future.

For reservations contact Clark Baxley at (863) 682-1111, ext. 213 or [clarkb@flcitrusmutual.com](mailto:clarkb@flcitrusmutual.com). For more information visit [www.irchlb.org](http://www.irchlb.org).

### Food Safety Manual Workshop

The University of Florida/IFAS Cooperative Extension Service will be hosting a "Building Your Own Farm's Food Safety Manual and Plan" workshop January 28 at 10 a.m. at the Sumter County Extension Office. Farmers and growers who are interested in building their own Food Safety Manual are encouraged to attend. Registration is \$30. To register visit <http://nfrec.ifas.ufl.edu> and click 'Small Farms Academy', then 'Available Courses' for a workshop brochure, registration form, and agenda. For more information, call Sarah White at (386) 362-1725 ext. 102 or email [sewhite@ufl.edu](mailto:sewhite@ufl.edu).



### Citrus OJ Break

An "Update on Foliar Nutritionals & Pesticides to Manage Citrus Greening and Canker" workshop will be Jan. 25 at 9:30 a.m. at the Bert J. Harris Jr. Agricultural Center in Sebring. Contact Katie at (863) 402-6540 or [kateduncan@ufl.edu](mailto:kateduncan@ufl.edu) to register.

### Calibration Rodeo Event

A low volume sprayer calibration event will be Feb. 3 in Bartow and Feb. 4 in Immokalee at 9:00 a.m. Experts will be there to assist with the calibration of low volume sprayers to determine spray particle size distribution during application. Low volume sprayers are generally considered to apply less than 10 gallons per acre. The event is free. Pre-register by calling (863) 956-1151.

### Pesticide License Review & Testing

A pesticide license review and testing class is on Feb. 8 at 9:00 a.m. at the Hardee Co. Extension Office. Three CEUs will be offered to individuals having a current pesticide license and

will be renewing using CEUs. Registration is \$38. Call (863) 773-2164 to register. Registration is requested prior to Jan 31.

### Citrus Production School

The annual citrus production school will be conducted February 1, 8, and 15 at the Turner Exhibition Hall at 7 p.m. Topics will include psyllid and disease management, good Ag practices, numeric nutrient criteria and nutritional programs for HLB management. Registration fee is \$25. Please contact the office for a registration form.



### Pest Management Workshop

There is a "Pest Scouting & Management" workshop Feb. 10 at 10 a.m. at the Immokalee IFAS Center. 2 CEUs for Pesticide License Renewal and 2 CEUs for Certified Crop Advisors will be provided. Reservations are required. Call 863 674-4092 or email to [maz@ufl.edu](mailto:maz@ufl.edu)



### Boyd Cocktail Update

Dr. Bob Rouse, UF/IFAS Southwest Florida Research and Education Center, provides an update of his research on the "Boyd Cocktail" in an interview at [www.southeastagnet.com](http://www.southeastagnet.com).



### CEU Opportunity

Another CEU is being offered in the December Florida Grower, entitled "Dew Diligence." Read the article, then visit [FloridaGrower.net](http://FloridaGrower.net) to receive the question set. Send in your question set along with your license number to be graded and receive credit.



See "Educational" Page 6.

## 2010 PRVCGA Associate Members

Please Note: The February Edition will begin listing the 2011 members. If you haven't yet paid your membership, you will want to do so this month to assure you are included in the listing.

<b>Aglime Sales, Inc.</b>	<b>First State Bank of Arcadia</b>	<b>Pavese Law Firm</b>
<b>Agricultural Services International</b>	<b>Flatwoods Consulting Group</b>	<b>Peace River Citrus Products, Inc.</b>
<b>Bayer Crop Science</b>	<b>Florida Citrus Mutual</b>	<b>Progressive Water Resources, LLC</b>
<b>Brandt</b>	<b>Florida Citrus Service, Inc.</b>	<b>Raymond James &amp; Assoc., Inc.</b>
<b>Bright Tiger, LLC</b>	<b>Florida Fuel of Hardee County, Inc.</b>	<b>Root Solutions</b>
<b>Bright Leaf Citrus Nursery</b>	<b>Florida Grower Magazine</b>	<b>Roper Grower Co-Op/Tree See</b>
<b>BV Oil Co.</b>	<b>Florida Orange Marketers, Inc.</b>	<b>RSM McGladrey</b>
<b>C.W. Harrison, Inc.</b>	<b>Florikan</b>	<b>Russ Groves Service, Inc.</b>
<b>Calusa Helicopters</b>	<b>Flo-Tec, Inc.</b>	<b>Scotts Professional Horticulture</b>
<b>Carden &amp; Associates, Inc.</b>	<b>G.P. Solutions</b>	<b>South Florida Land Sales</b>
<b>Carlton Law Firm, P.A.</b>	<b>GSI Supply, Inc.</b>	<b>Southeast AgNet/Citrus Industry Magazine</b>
<b>CF Industries</b>	<b>George Mason Citrus, Inc.</b>	<b>Southern Gardens Citrus Processing</b>
<b>Chemical Containers, Inc.</b>	<b>GOWAN Co.</b>	<b>Stallings Crop Insurance, Inc.</b>
<b>Citrus Solutions, LLC</b>	<b>Growers Fertilizer Corp.</b>	<b>Steele Truck Center, Inc.</b>
<b>Clear Springs Enterprises, LLC</b>	<b>Gulf Citrus Management</b>	<b>Sun Ag, Inc.</b>
<b>Conley Grove Service, Inc.</b>	<b>Hackney, Ames and Heitman PA</b>	<b>Sunbelt Reserch &amp; Development Co.</b>
<b>Crop Protection Services</b>	<b>Hardee County Farm Bureau</b>	<b>SunTrust Bank</b>
<b>Custom Harvest Insurance LTD.</b>	<b>Heller Bros. Packing Corp.</b>	<b>SunTrust Investment Services, Inc. - The Benton/Aguilar Group</b>
<b>Cutrale Citrus Juices USA, Inc.</b>	<b>Howard Fertilizer and Chemical</b>	<b>Syngenta Crop Protection, Inc.</b>
<b>David Cannon Well Drilling Inc.</b>	<b>Johnson Harvesting, Inc.</b>	<b>The Andersons, Inc.</b>
<b>DeSoto Automotive, Inc.</b>	<b>Joshua Citrus, Inc.</b>	<b>The Avanti Company</b>
<b>DeSoto Insurance Agency, Inc.</b>	<b>Joshua Water Control District</b>	<b>Three L</b>
<b>DeSoto Machine Shop/Triangle</b>	<b>KeyPlex</b>	<b>Tranex d/b/a Valencia Harvesting</b>
<b>DLF International, Inc.</b>	<b>Krause Grove Service, Inc.</b>	<b>Triangle Chemical Company</b>
<b>Dunson Harvesting, Inc.</b>	<b>L. Dicks, Inc.</b>	<b>Tropicana Products</b>
<b>E Co Consultants, Inc.</b>	<b>Locher Environmental Tech, LLC</b>	<b>U.S. 1031 Exchange Services, Inc.</b>
<b>EKC Citrus Growers, LLC</b>	<b>Louis Dreyfus Citrus</b>	<b>United Irrigation Supply, Inc.</b>
<b>Environmental Consulting &amp; Technology Inc.</b>	<b>Lykes Insurance, Inc.</b>	<b>Wauchula State Bank</b>
<b>Everglades Harvesting &amp; Hauling</b>	<b>Maassen Oil Company, Inc.</b>	<b>Wedgworth's, Inc.</b>
<b>Farkas Citrus Nursery</b>	<b>Martin Realty Fla, Inc.</b>	<b>Wells &amp; Associates Ins Agency</b>
<b>Farm Credit Leasing</b>	<b>Monsanto</b>	<b>WilsonMiller, Inc.</b>
<b>Farm Credit of S.W. Florida</b>	<b>Morgan Stanley Smith Barney</b>	<b>Yara North America, LTD.</b>
<b>Fields Equipment Co., Inc.</b>	<b>Newton Crouch, Inc.</b>	
<b>First National Bank of Wauchula</b>	<b>ORO-Agri, Inc.</b>	
	<b>Pantuso, Inc.</b>	

## Educational cont.

### Battling Black Spot

The “Battling Black Spot” webinar can now be viewed online at <http://video.webcasts.com/events/pmny001/viewer/index.jsp?eventid=36133>.

### Brazil Citrus Tour

Steve Futch will be conducting a citrus grower tour to Brazil between

June 11-18. The final agenda will be available early February. If interested, contact Steve Futch at [shf@ufl.edu](mailto:shf@ufl.edu) or by calling (863) 956-1151.



### Bus Tour Presentation

UF researcher, Arnold Schumann

recently summarized his presentation of the Advanced Citrus Production System utilizing open hydroponics in an interview with Ernie Neff of *Citrus Industry Magazine*. The interview can be heard at <http://southeastagnet.com/2010/12/26/advanced-citrus-production-system-advantages-cited/>.

## OJ Sales Continue Decline



Orange juice sales continue to decline. The Florida Department of Citrus (FDOC) hopes to reverse that trend with the new advertising plan.

Sales are down 9.9% compared to the same period last year and down 8% season to date. The reason for this decline is stated as package downsizing and an increase in reconstituted orange juice prices.

Sixty percent of the reduction is due to the reconstituted category.

The new FDOC citrus commercials were released January 3. The *Status Meeting* commercials bring to life how a glass of orange juice gives you the energy to be ready for whatever the day might throw at you. It focuses on the sustained energy orange juice offers all day.

The commercials can be viewed at [www.FloridaGrower.com](http://www.FloridaGrower.com) or are available at the association office.

The schedule that outlines the date, network/cable, program, day and time slot the commercials will run is also available from the association office.

The FDOC is also using other social media channels such as Facebook and Twitter to reach target audiences. Visit [facebook.com](http://facebook.com) to search for the Florida Orange Juice page. Students and teachers can view the latest citrus information at [www.CaptainCitrus.com](http://www.CaptainCitrus.com) now through the Florida Citrus School Program.

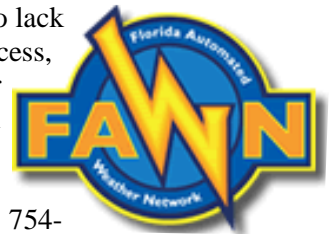
## FAWN– Freeze Tools

The Florida Automated Weather Network (FAWN) System has added a Freeze Alert System for areas near Dover and Balm. This may be helpful for north Manatee County members or used as a benchmark for other areas. Alerts are available via cell phone, text and/or email. Visit <http://fawn.ifas.ufl.edu/> and click on

“FREEZE ALERT SYSTEM” to register.

Also, other useful items are located under ‘FAWN Tools’ in the ‘cold protection toolkit’. The kit includes the minimum overnight temperature forecast, forecast tracker for each FAWN site and the wet-bulb based irrigation cutoff temperatures.

For those who lack computer access, weather information can be obtained by calling (866) 754-



5792. The local code for Arcadia is 470 and Ona is 380.



Hollie, Communications Assistant of PRVCGA, will be returning to school and begin working part-time from college starting Monday, Jan. 10.

The nature of the part-time relationship will be under development over the next few weeks. Please leave messages when calling so we can address your needs properly.

Thanks for your understanding and patience as we work with Hollie to finish her education.

# FLORIDA Citrus SHOW

## WEDNESDAY, JANUARY 19

## THURSDAY, JANUARY 20

8:00 a.m. **Registration**

**The Florida Citrus Industry in 2011 Session**

8:50 – 9:00 **Welcome**  
Chairman, Indian River Citrus League

9:00 – 9:20 **What's the Citrus Research & Development Foundation Doing For You?**  
**Dan Gunter**, Citrus Research & Development Foundation

9:20 – 9:40 **Outlook for the Florida Fresh Fruit Industry**  
**Richard Kinney**, Florida Citrus Packers

9:40 – 10:00 **Florida Citrus Good Agricultural Practices (GAPs)**  
**Peter Chaires**, New Varieties Development and Management Corp.

10:00 – 10:50 **Visit the Trade Show**

10:50 – 11:10 **Agricultural Water Issues in Florida**  
**Rich Budell**, FDACS, Director, Office of Ag Water Policy

11:10 – 11:20 **IFAS Interaction with the Florida Citrus Industry**  
**Dr. Jack Payne**, UF Senior Vice President for Agriculture and Natural Resources

11:20 – 12:00 **TBD**

12:00 – 1:30 **Lunch – Visit the Trade Show**

8:00 a.m. **Registration**

8:00 – 8:30 **Visit the Trade Show/Continental Breakfast**

**Florida Citrus Pest Management**

8:30 – 9:00 **Update on Citrus Leafminer Management**  
**Lucasz Stelinski**, UF/IFAS

9:00 – 9:30 **Citrus Health Management Areas (CHMAs)**  
**Michael Rogers**, UF/IFAS

9:30 – 10:30 **Visit the Trade Show**

10:30 – 11:00 **Current Status of Canker Management Research**  
**Jim Graham**, UF/IFAS

11:00 – 11:30 **Citrus Black Spot Management Update**  
**Megan Dewdney**, UF/IFAS

11:30 – 12:00 **USDA Asian Citrus Psyllid Research**  
**David Hall**, USDA/ARS

12:00 – 1:30 **Lunch and Visit the Trade Show**

1:30 – 2:00 **Asian Citrus Psyllid Management Update**  
**Phil Stansly**, UF/IFAS

2:00 – 2:30 **Postharvest Issues/Maximum Residue Limits**  
**Mark Ritenour**, UF/IFAS

2:30 – 3:00 **An Economic Analysis of Changes in the U.S. Orange Juice Market**  
**Allen Morris**, UF/IFAS

**Maintaining Citrus Production in Florida**

1:30 – 2:00 **Utilizing Advanced Production Systems for New Plantings**  
**Arnold Schumann**, UF/IFAS

2:00 – 2:30 **Using Foliar Nutrition for Improved Tree Health**  
**Bob Rouse**, UF/IFAS

2:30 – 3:20 **Visit the Trade Show**

3:20 – 3:40 **USDA Rootstock Program**  
**Dr. Kim Bowman**, Research Geneticist at the Horticultural Research Lab

3:40 – 4:00 **IFAS Rootstock/Variety Program**  
**Jude Grosser**, UF/IFAS

4:00 – 4:20 **Windbreaks Utilization in Florida**  
**Bill Castle**, UF/IFAS

**How To Register?**  
[www.CitrusShow.com](http://www.CitrusShow.com)

**Registration Fee:**

- Admission to Florida citrus Show education sessions
- All education materials
- Admission to Florida citrus Show exhibit halls & demonstration areas
- Continental breakfast & refreshment breaks

We encourage advance registration to avoid waiting in line the of the show. Registration opens at 8:00 a.m. on both Jan. 19 and 20.

**Hotel Information:**  
Fairfield Inn & Suites, 6502 Metal Dr., Ft. Pierce • Phone: 772.462.2900  
Florida Citrus Show Rate: \$89 per night (plus tax)  
Reservation Deadline: January 7, 2011

**Directions:**  
2000 Virginia Ave., Ft. Pt. Pierce • Phone: 772.462.1521

## Sponsor Partners



The miracles of science™



Silver Patron Sponsor  
**AgroSource, Inc.**

## Preparing for Your Next Crop



Each year Dr. Gene Albrigo provides his prediction of bloom intensity, as well as when to

expect bloom for the coming season. According to his December 21 report, citrus trees have received sufficient hours below 68 degrees to induce a "more than adequate" bloom.

Highlights of his report state, accounting for freeze damage will be the deciding factor in the coming year's crop. If damaged leaves persist, it indicates the green tissue of

the shoot was damaged. The associated buds will be lost. If damaged leaves quickly abscised, the buds should be ok and will grow normally and most of these buds will be flower buds this year.

It is a good idea to delay the beginning of bud growth until after 10 January. This will delay flowering to a more normal bloom date and delay loss of cold hardiness. This can be accomplished by keeping soil moisture low and having the trees in a slightly droughty condition so that the buds will not grow if a warm period occurs. With the high induction levels now present, the buds will begin to

grow if daytime temperatures reach the high 70s to 80°F for just a few days. Watch the weather reports. If daytime high temperatures are projected into the 80 degree range keep soil moisture low to avoid initiation of bud growth.

To view the report in its entirety visit: <http://www.crec.ifas.ufl.edu/extension/flowerbud/index.htm>.

Growers can calculate their estimated bloom date with observations from specific grove sights by using a model provided by Dr. Albrigo and IFAS. To access the model visit <http://www.hyalina.com/bloom/index.jsp>

## Putnam Staff Continued from Page 3

**Sherman Wilhelm, Director of Policy & Budget:** Wilhelm joined the Department in 1986 as Staff Counsel to the Commissioner, a position he held for 13 years. In 1999, he was promoted to Director of the Division of Aquaculture and has been serving the Department in this capacity since.

**Andy Rackley, Director, Division of Agriculture Environmental Services:** Rackley was appointed Director of the Division of Agriculture and Environmental Services in 2008 after more than 30 years in private business.

**Jerry Bryan, Director, Division of Agriculture Law Enforcement:** Bryan joined the Department in 1994 and served in three other capacities within the Office of Agriculture Law Enforcement before being promoted to Director.

**Rich Budell, Director, Division of Agriculture Water Policy:** Budell joined the Department in 1985 and served as Asst. Director of the Office of Water Policy, Asst. Director of the Division of Agricultural Environmental Services and Bureau Chief of Pesticides before being promoted to his current position.

**Lee Cornman, Acting Director, Division of Food Safety:** Cornman joined the Department in 2005 and has almost 40 years of experience in food safety and operations.

**Ellen Prince, Acting Director, Division of Fruits & Vegetables:** Prince joined the Department in 2003 after working for 35 years with the Processed Products Branch of USDA.

**Connie Crawford, Director, Division of Licensing:** Crawford joined the Division of Licensing in 1985 and was appointed Director in 2008.

**Dr. Wayne Dixon, Acting Director, Division of Plant Industry:** Dixon joined the Department in 1980 and has served as Assistant Director and Bureau Chief of Entomology, Nematology and Plant Pathology for the Division of Plant Industry before his current position.

**Izzy Rommes, Director, Division of Standards:** Rommes joined the Department in 1993 and previously served as the Chief of the Bureau of Fair Rides Inspection and Assistant Director of Standards.



**PLEASE NOTE**

Barbara will no longer be available by Nextel Direct Connect.

Please update to your contact list.

PRVCGA Office: (863) 494-0061  
or (863) 773-2644

Cellular: (863) 990-9701



Join us at the Board Meeting

January 18 -9 a.m.

1st National Bank

Wauchula

This will be the first meeting with our newly elected board of directors.

## People, Places, & Things

The USDA has released a notice to growers regarding the release of the **US-942 Citrus Rootstock** now available to growers. The attributes of the new stock are resistance or tolerance to tristeza virus, blight and Phytophthora root diseases. It is semi-dwarfing, considered to produce good quality fruit, productivity per tree and per canopy volume. For more information contact Kim Bowman at the US Horticultural Lab in Ft. Pierce (772) 462-5800.

**Syngenta Crop Protection** has initiated their 2011 internship program. There will be a total of seven positions throughout the state's major citrus producing areas. For more details or to recommend an intern contact John Taylor (561)694-8671 or email [john.taylor@syngenta.com](mailto:john.taylor@syngenta.com). Applications are accepted through January 2011.

The **Florida Department of Citrus** has released several informational reports for your review. Reports are listed below.

- ◇ The October Export and Import reports are now available at <http://www.fdocgrower.com/emr/availability.php>
- ◇ The Nielson-Executive Report reflecting data and charts for over 500 combinations of OJ and GJ categories by region and outlets is available at <http://www.fdocgrower.com/emr/nielsenexecutive.php>.
- ◇ The Economic and Market Indicators for December are now available at [fdocgrower.com](http://www.fdocgrower.com) by clicking on 'reports and indicators.'

John O'Connor, Jr. and Frank Connor (deceased) were named the **Manatee County 2010 Agriculturalists of the**

**Year** and were inducted into the Manatee County Agricultural Hall of Fame. Inductions were made at the annual Farm City Week Luncheon sponsored by the Women's Club of Palmetto.

We have received a report for area extension agents regarding increased **Department of Labor and Department of Transportation inspections**. Increased personnel nationwide is resulting in increased inspections. Be ready by being prepared and abiding my current laws.

Gordon "Mac" Martin was appointed to the **Peace River Basin Board**. An Associate member of PRVCGA, Mac owns and operates Martin Realty in Arcadia. Mac will succeed Ken Harrison, also of Arcadia.

In the recent version of the West Central newsletter, there is a note to growers regarding recent **leaf drop on HLB trees**. We also have heard growers commenting on this phenomenon in the past couple of months. Maury Boyd noted during our recent bus tour, he has experienced similar leaf drop in his grove from infected trees in 2003. He accounts for the leaf loss as a weather incident where the trees are reacting to a sudden drop in temperatures from the warm summerlike temperature felt in the fall. He stated his trees regained the leaves and no permanent damage occurred. While this is unscientific, we felt it was worth passing along.

The USGS released a study conducted with the Southwest Florida Water Management District on the **Charlie Creek Basin**. The study was done to better understand the effects of groundwater levels and headwater wetlands on stream flow in the Charlie Creek basin. You can access this report at <http://pubs.usgs.gov/sir/2010/5189/>.

The 2010-11 Florida citrus crop estimate has decreased 3 million boxes to an estimated 143 million boxes. Early-mid season oranges were decreased by 1 million boxes and Valencia oranges by 2 million. Visit [www.nass.usda.gov/StatisticsbyState/Florida/Publications/Citrus/cfp.htm](http://www.nass.usda.gov/StatisticsbyState/Florida/Publications/Citrus/cfp.htm) for the complete USDA estimate. The next report will be released January 12 at 8:30 a.m. A separate freeze damage report is being conducted. The report will be released January 18 at 3 p.m.

**Syngenta** is continuing its investment in Florida agriculture by donating funds to the Florida Automated Weather Network (**FAWN**) for the second year in a row. Syngenta initiated support of the program in 2009 after learning about decreases in government and university funding. This donation is a clear statement of the company's support of our industry.



Now pay all your PRVCGA invoices online through

Just visit [prvcitrus.org](http://prvcitrus.org)

# Peace River Valley Citrus Growers Association

6 East Oak Street  
Arcadia, Florida 34266

Phone: 863-494-0061

Phone: 863-773-2644

Fax: 863-494-4976

E-mail: [oj@prvcitrus.org](mailto:oj@prvcitrus.org)

## FLORIDA Citrus SHOW

January 19-20, 2011  
Havert L. Fenn Center  
Ft. Pierce, FL

Presented By



Extended Content Coverage Sponsor



The Florida Citrus Show is dedicated to offering ALL Florida citrus growers the latest information on new production techniques, industry trends, and a sampling of new varieties. Citrus growers will find a wealth of valuable information unmatched in any other industry event.



Make the Florida Citrus Show your meeting of choice when it comes to connecting with fellow industry professionals, learning how to improve your citrus-growing operation and establishing beneficial business relationships.

Mark your calendar and plan on attending Florida's most comprehensive citrus event — the 2011 Florida Citrus Show.

- In-depth education sessions covering a wide array of timely topics that are important to citrus growers and their operations.
- Expert speakers from Extension and industry representatives.
- Extensive indoor and outdoor exhibit areas for "hands-on, in-person" previews of the latest products, equipment, and services.
- The ability to connect with fellow growers and share success stories and best practices.
- FREE admission to qualified growers — bring your entire team to the seminar!



Register at  
[www.CitrusShow.com](http://www.CitrusShow.com)